

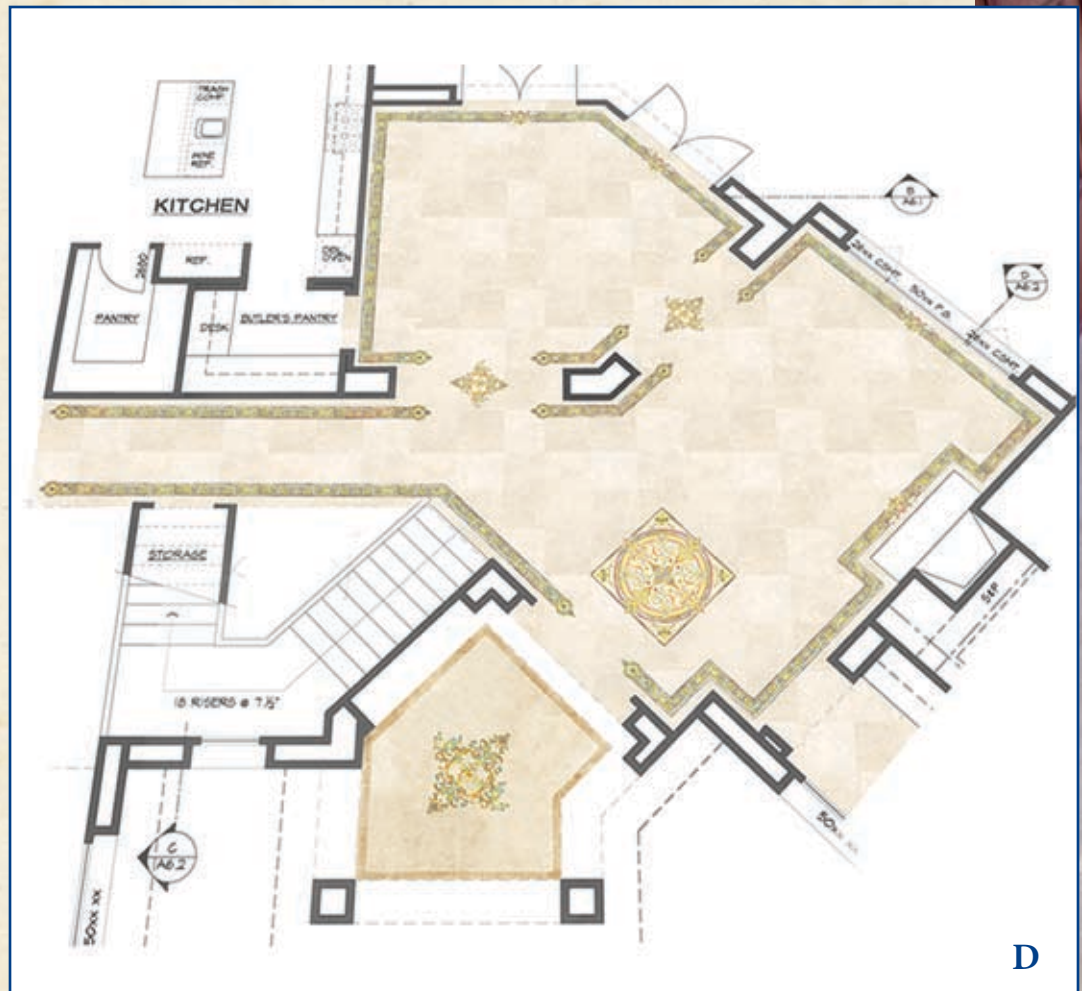
One man's love of color...

By SONNA CALANDRINO

It was one man's love of color for his residence that was the initial motivation behind this stunning, custom creation in natural stone.

It was another's love of art that helped form a concept and take it to design. And it was a blend of art and science that made it all happen.

Harri Aalto of Aalto Design, Fairfield, Iowa, is the creative inspiration behind countless designs like this. A classically trained, internationally recognized fine artist, Harri is the one who takes the essence of the homeowner's thought and turns it into personal expression. Harri's designs and floor plans begin as black-and-white sketches, evolving into full-color renderings.

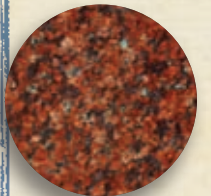
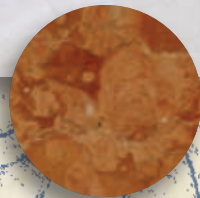


Once a final design is approved, every facet of Harri's design, color and style is translated into pure and often delicate forms by water jet cutting at Creative Edge Master Shop.

It is the water jet technology — water and garnet fired as a fine needle spray at very high speed — that results in precisely shaped, intricate pieces of stone, semiprecious stone, glass, metal, wood... even resilient and laminate. Pieces are first dry-fit to ensure accuracy of cutting and color, then become part of larger sub-assemblies for easier installation. >>

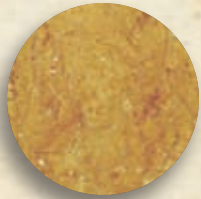
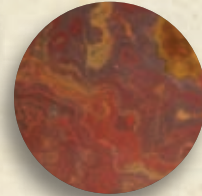
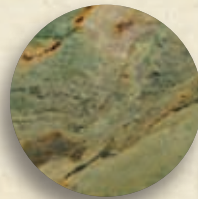
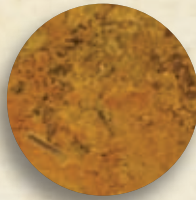
C







Harri Aalto



Note the thought as well as the art behind this residential layout: (A) colorful and surprisingly intricate borders frame the fireplace; (B) the border design with decorative finials extends the theme, framing and defining the hallway and the home's architectural features; (C) an 8-foot, custom-designed De Medici medallion welcomes guests at the front entry; (D) colorful accents gracefully integrate design and décor throughout.

What you are witnessing is a fabulous floor that is also part art and part architecture. 🍷

